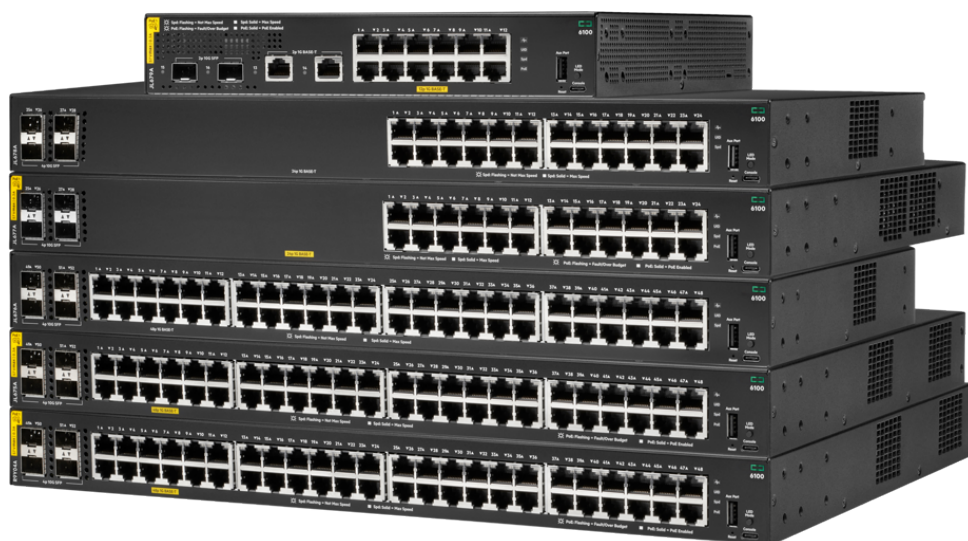


HPE Aruba Networking CX 6100 Switch Series



What's new

- Simplify IT operations with next-gen Layer 2 switch series that provides entry level, reliable, and convenient wired access connectivity.
- Right size with 12, 24, and 48 port 1U models with convenient built-in 1/10 GbE uplinks and up to 740W of Class 4 PoE.
- Silent deployment with compact and fanless 12-port PoE model.
- Flexibility to manage and simplify configurations with HPE Aruba Networking Central, HPE Aruba Networking Switch Multi-Edit Software, easy to use Web GUI,

Overview

The HPE Aruba Networking CX 6100 Switch Series is a modern family of entry level access switches ideal for branch offices, mid-market enterprise, and SMB networks. Designed for reliable, simple, and secure access, this switch family provides a convenient wired access solution for enterprise networks supporting IoT, mobile, and cloud applications.

Prepare your network for tomorrow's unpredictable demands with a powerful ASIC and the programmable HPE Aruba Networking CX Switch Operating System (AOS-CX) to deliver a more consistent, more efficient operator experience. This Layer 2 switch series has convenient built-in high speed uplinks with up to 740W of IEEE 802.3at Class 4 PoE to support IoT devices such as security cameras and wireless APs. A compact and fanless 12 port model is ideal for use in quiet work spaces. With robust QoS, support for static routing, and IPv6, these switches also

or industry standard CLI.

- Ready for software defined networking with REST APIs.

simplify ownership with no switch software licensing requirements.

Features

Entry Level Layer 2 Access Switches

The HPE Aruba Networking CX 6100 Switch Series offers gigabit connectivity with high speed uplinks and optional PoE to provide entry level, reliable, and convenient wired access connectivity for enterprise branch office and SMB networks.

Delivers a simple, consistent operator experience with the HPE Aruba Networking CX Switch Operating System (AOS-CX) used across HPE Aruba Networking CX switching platforms.

Fully-managed enterprise class switches deliver Layer 2 capabilities with support for static routing, ACLs, robust QoS, traffic prioritization, sFlow, and IPv6.

Right size deployment with choice of 12, 24, and 48 port 1U models with convenient built-in 1/10 GbE uplinks and up to 740W of Class 4 PoE.

Simplifies ownership with no switch software licensing or subscriptions required.

Performance and Power

The HPE Aruba Networking CX 6100 Switch Series is designed with a dedicated ASIC that delivers very low latency, increased packet buffering, and adaptive power consumption.

Deploy wireless access points and IoT devices using HPE Aruba Networking CX 6100 switch models for up to 740W IEEE 802.3at Class 4 Power over Ethernet with up to 30W per port.

Four built-in wire speed 1/10 GbE uplinks eliminate bottlenecks at the access layer where users and devices connect.

Simplified Configuration and Management

The HPE Aruba Networking CX 6100 Switch Series provides flexibility to manage and simplify configurations with HPE Aruba Networking Central, HPE Aruba Networking Switch Multi-Edit Software, easy to use web GUI, or industry standard CLI.

HPE Aruba Networking Switch Multi-Edit Software introduces automation that allows for rapid network-wide changes and verifies policy conformance post network updates.

Unified management across wired, wireless, and WAN using HPE Aruba Networking Central.

Reduce manual IT operation tasks around initial deployment or on-going configuration changes to accommodate adds, moves, and changes with colorless ports using local user roles and local-MAC-Authentication (LMA).

Ready for software-defined networking with REST APIs for fine-grained programmability of network tasks.



Technical specifications

HPE Aruba Networking CX 6100 Switch Series

Ports	Depends on model
Memory and processor	Dual Core ARM Cortex A9 @ 1016 Mhz 4 GB DDR3, maximum, depending on model 16 GB eMMC
Latency	1 Gbps: 2.3 μSec , 10 Gbps: 2.6 μSec, maximum, depending on model
Throughput	Up to 98.6 Mpps, depending on model
Switching capacity	176 Gbps, maximum, depending on model
PoE capability	370W, maximum, depending on model
Input voltage	100-127 VAC / 200-240 VAC
Power consumption	Max Power (w/o PoE): 45W Max Power (w/ PoE): 480W Depending on model



For additional technical information, available models and options, please reference the [QuickSpecs](#)

HPE Aruba Networking Services

HPE Aruba Networking services simplify and accelerate the network technology lifecycle, enabling your network to scale with better predictability and cost-effectiveness. Whether you operate your own network and need to improve your IT efficiencies, or you want to offload some of the burden, we have the services you need to reach your goals.

Learn more about what HPE Services - Aruba Networking has to offer at: <https://www.hpe.com/edge/services>

Support Services

Our support portfolio provides the essential support elements as well as proactive and preventive features to help you improve your team's productivity and get the most from your network. Our support customers benefit from faster issue resolution, simplified operations and efficiencies, and reduced network issues.

Professional Services

With deep intellectual capital and purpose-built tools, our team delivers a range of standard and custom professional services designed to accelerate your value from HPE Aruba Networking technology.

Project based services include: Annual subscription services include:

- Planning, audit, and assessment
- Architecture review and design
- Deployment, migration, and knowledge transfer
- Network optimization
- Intelligent Operations
- Customer Experience Management

Our [Education Services](#) allow your team to come up to speed quickly.

HPE GreenLake for Networking

Our NaaS solution, is part of the HPE GreenLake services family, and simplifies network operations, accelerates equipment handling, and increases the value of your HPE Aruba Networking solution. If you need expert guidance and automation-based operations for your team, please explore our NaaS approach through HPE GreenLake for Networking.

Visit [HPE.com](https://www.hpe.com)



Make the right purchase decision.
Contact our presales specialists.



Contact us